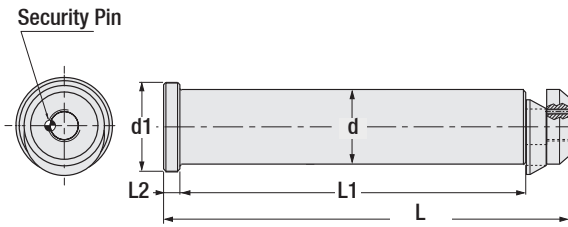


### Die Lifting Pin - BMW

Code: G 173

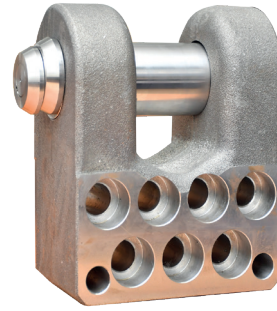
Due to safety reasons, die weight should not exceed maximum load that 2 Lifting Pins can bear (max. capacity).



d h11	d1	L +1	L1	L2	Max. Load (kg)	Max. Capacity (kg)
30	40	158	129	10	3200	6400
40	50	187	155	10	5000	10000
50	60	220	180	11	8000	16000
60	70	246	205	11	12500	25000
80	90	305	205	12	18000	36000

Order: G173. d

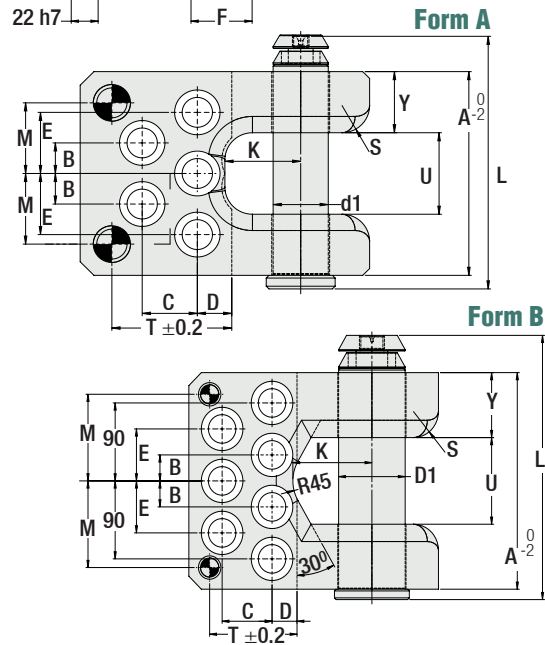
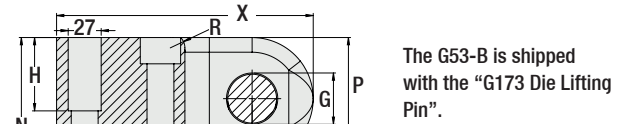
Order Example:  
G173. 50



### Die Lifting Bracket - BMW

Code: G53-B

Due to safety reasons, die weight should not exceed maximum load that 2 Lifting Brackets can bear.



D1	L	A	P	X	G	K	S	Form	Max. Load (kg)	Max. Capacity (kg)
30	158	126	80	185	32	50	16	A	3200	6400
40	187	150	100	210	42	55	20		5000	10000
50	220	175	120	240	52	70	24		8000	16000
60	246	200	140	300	62	80	30		12500	25000
80	305	250	160	300	82	95	30	B	18000	36000

R	U	Y	F	T	C	D	M	E	B	N	H	Screw
12	50	38	40	85	35	30	45	40	20	75	40	M16 x 80
12	60	45	50	87	40	25	52	45	22.5	95	60	M20 x 100
16	75	50	60	95	45	35	62.5	50	25	115	80	M24 x 120
20	80	60	65	145	65	60	77.5	65	35	130	95	M36 x 160
20	100	75	90	105	60	30	100	60	30	150	115	M30 x 130

Order: G53-B. D1

Order Example:  
G53-B. 50